

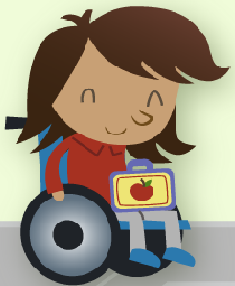
ELEMENTARY LATCHKEY PROGRAM



We provide before and afterschool care for students in grades K – 6 any day that school is open and on a regular schedule.

We are open 7:30am for students who need to arrive early in the morning. The fee for the morning program is \$3.00 a day per child.

Students may go to breakfast in the SW Café at the end of the program.

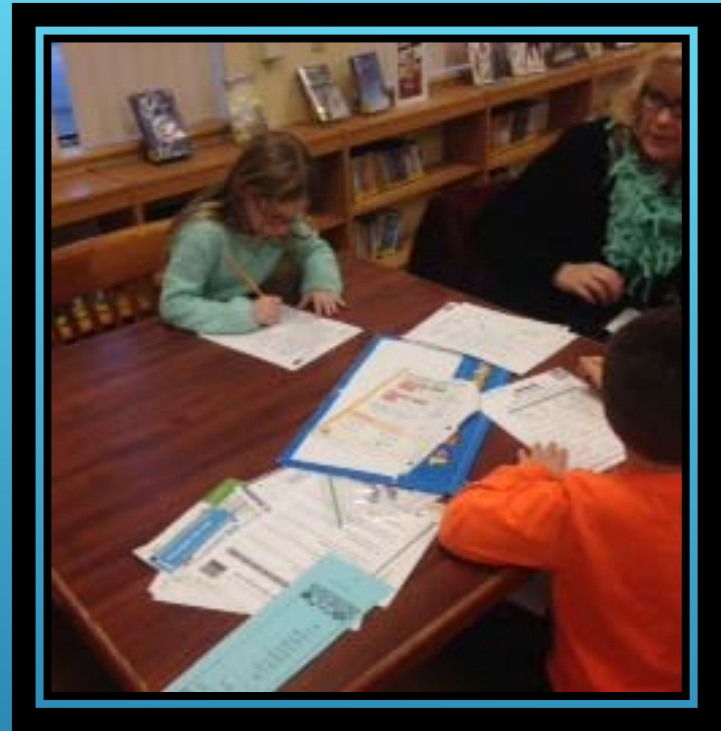
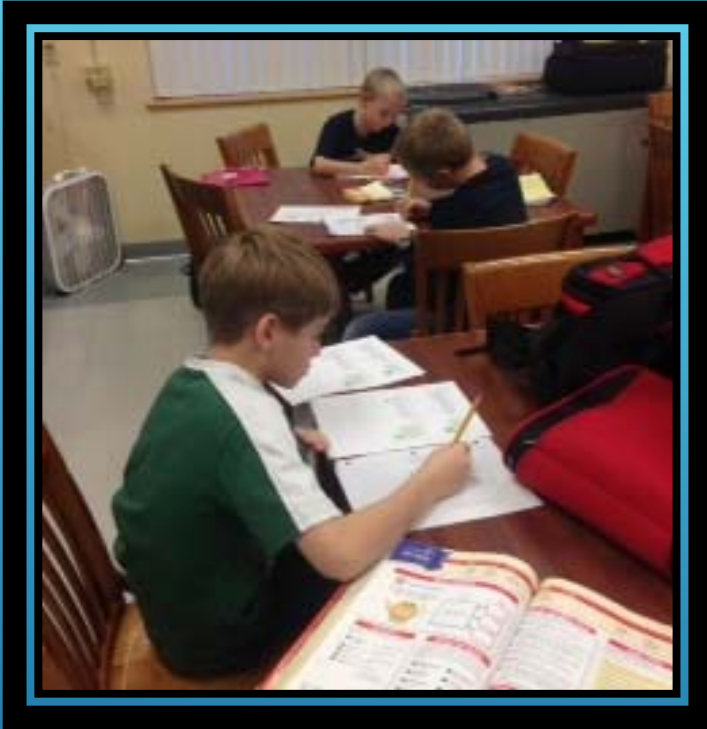




Afternoon session is from 3:30pm to 5:30pm. A healthy snack is provided to all our participants.



Students have the opportunity to play, create a craft project or go to our computer lab in the afternoon program.



Homework help is available
Monday - Thursday





WE PLAY OUTSIDE WHEN WE CAN!

- ▶ Sullivan West Elementary School Latchkey Program is happy to be celebrating our 10th anniversary in the 2016-17 school year. We will be continuing the Latchkey Program for students in Kindergarten to Sixth Grade. The goal of the program is to provide after-school supervision for children from 3:30 p.m. to 5:30 p.m., Monday through Friday.
- ▶ The children will be able to participate in organized activities such as arts and crafts, computer lab, indoor and outdoor play. Homework support will also be available for all grades Monday – Thursday. Children will also be provided a healthy snack during the afternoon, covered by a \$6.00 per day per child fee. **We also have a morning program from 7:30am to 8:10am.** . Daily fee is \$3.00 per child.
- ▶ *They do not need to attend every day to take advantage of these programs.* If you have an alternate payment, please indicate on your application. The program will be held in the 1994 building of the Sullivan West Elementary School.

